





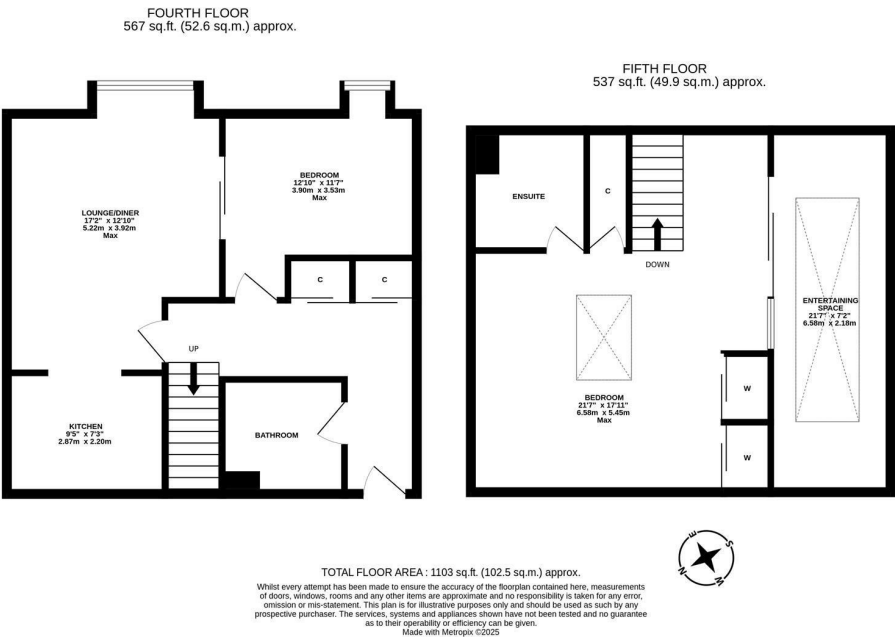
This two bedroom duplex apartment is positioned on the fourth and fifth floor within the bespoke and imposing development of Jesmond Assembly. Situated on Eskdale Terrace, Jesmond and built as stylish accommodation for the over 60's, Jesmond Assembly provides excellent accommodation for a range of buyers and is well located to provide access to Clayton Road, with its shops and facilities and is also within a stones throw to Jesmond Metro Station, providing further access to Newcastle City Centre and beyond.

The accommodation briefly comprises: communal entrance hall with secure telephone entry system; communal lounge with kitchenette; a first floor reading/common area with a range of books and a comfortable seating area leading out to a separate patio area and both lift and stair access to all floors.

Private entrance hall with two storage cupboards; 17ft lounge diner, open to kitchen with fitted units, work surfaces and some integrated appliances; bathroom with three piece suite; bedroom two with sliding door access to lounge diner. Stairs lead to bedroom one, an impressive full length room measuring 21ft, with sky light, two fitted wardrobe storage cupboards and separate storage cupboard, access to an en-suite shower room; a generous lounge/entertaining space with sky light.

Externally, allocated off-street and residents parking (subject to cost), and well manicured communal outdoor space. Early viewings are advised to appreciate the accommodation on offer.

Duplex Apartment | Two Bedrooms | Lounge Diner to Kitchen | Bathroom & En-Suite Shower Room | Entertaining Space/Gym | Off-Street Parking | Communal Lounge & Reading Room/Common Area | Lift Access | Great Location | Stylish Living for Over 60's | Leasehold | Service Charge £6,565.92 Per Annum | Council Tax Band (tbc) | EPC: B



Offers Over £395,000

**IMPORTANT NOTE:** These particulars and the descriptions and measurements herein do not constitute representation and whilst every effort has been made to ensure accuracy, this cannot be guaranteed.

